



END USER INSTRUCTIONS - READ BEFORE USE

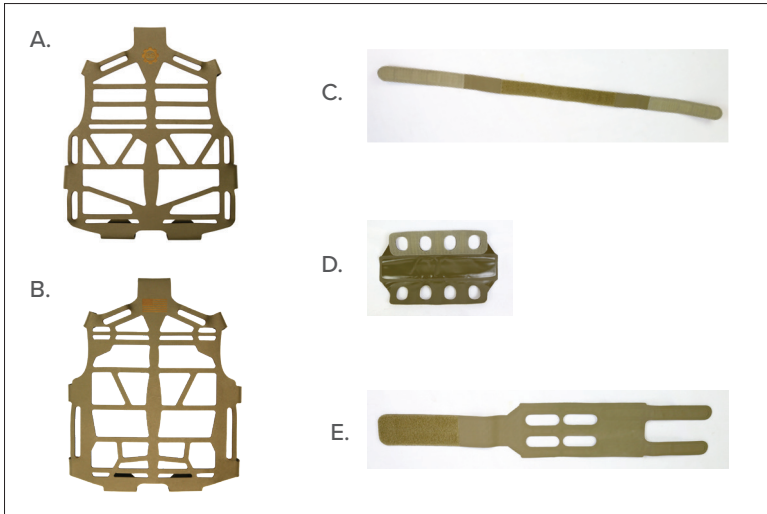
PRODUCT NAME:

# PlateFrame® Harness Assembly

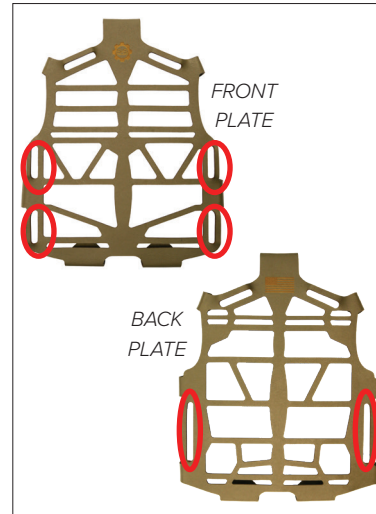
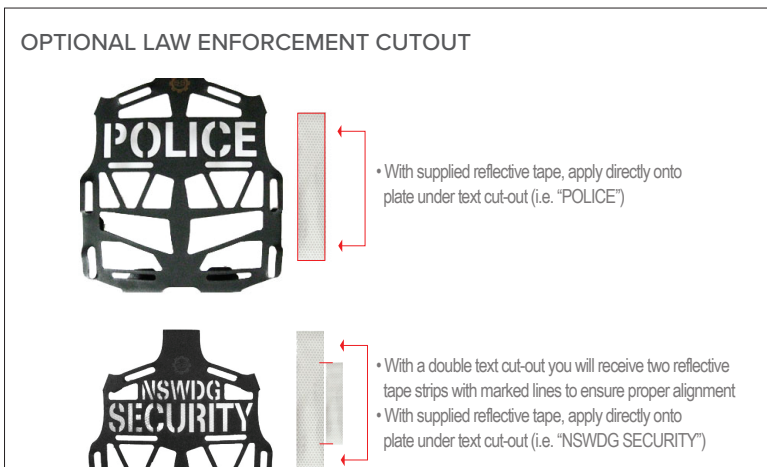
PART NUMBER:

PF-001

## PACKAGE INCLUDES:



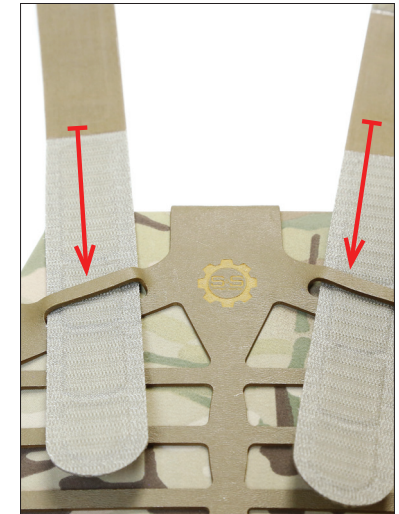
- A. Front PlateFrame®  
B. Back PlateFrame®  
C. (2) Shoulder Strap  
D. (2) Shoulder Pad  
E. (2) Cumberbund



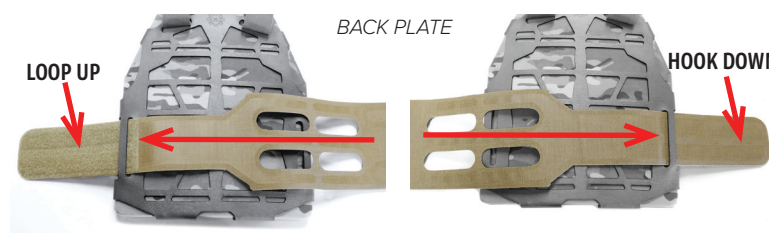
- 1** Identify the FRONT PlateFrame (has 4 small vertical slots) and the BACK PlateFrame (has 2 large vertical slots)



- 2** Starting from the bottom, insert the ballistic plates into both PlateFrames® (SOC not included).



- 3** Assemble the shoulder straps by first inserting them into the slots at the top of the FRONT and BACK PlateFrame®. Fold the straps and connect the Velcro to secure.



- 4** Insert Cumberbund through large slots on the BACK PlateFrame. On the left the LOOP is facing upwards, on the right the HOOK is facing downwards.



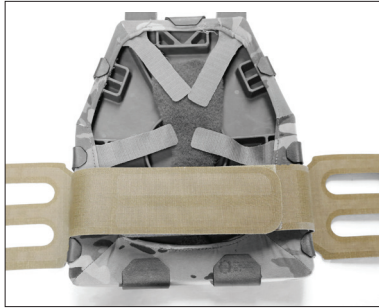
END USER INSTRUCTIONS - READ BEFORE USE

PRODUCT NAME:

# PlateFrame® Harness Assembly

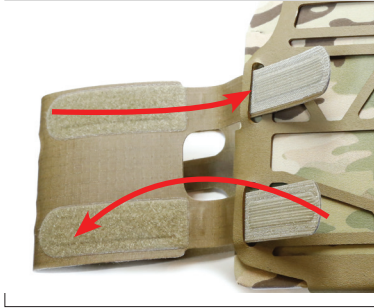
PART NUMBER:

PF-001



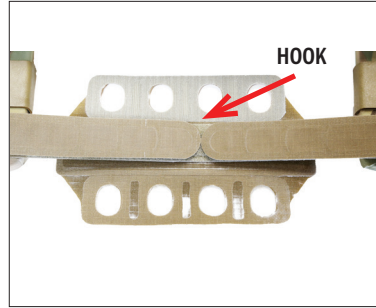
5

Flip the PlateFrame over and connect the ends of the Cummiebund.



6

Insert the forked end of the Cummiebund into the two slots on the FRONT PlateFrame and connect the Velcro. Repeat this step for the opposite side.



7

Lay the shoulder pads flat underneath the shoulder straps, HOOK side up and to the INSIDE. Connect the shoulder pad so the rough edge is facing away from the neck.



8

Repeat for the opposite shoulder pads.



9

The PlateFrame and Harness assembly is now complete.

## ADJUSTING SHOULDER STRAPS



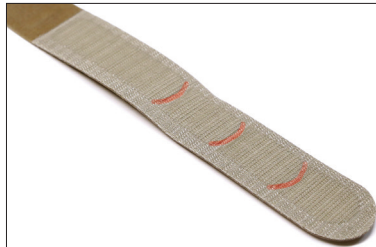
1

Put on the PlateFrame assembly and adjust the shoulder straps so the plate rests at the appropriate height.



2

Take note to where the shoulder strap overlaps, as this will indicate where to trim the excess.



3

The Velcro side of the shoulder strap has integrated trim lines, which also aid in indicating where the user should cut.



4

Cut along the curved guides, do this for both shoulder straps.



5

The shoulder straps should now be sized correctly based on the user's preference.