



END USER INSTRUCTIONS - READ BEFORE USE

PRODUCT NAME:

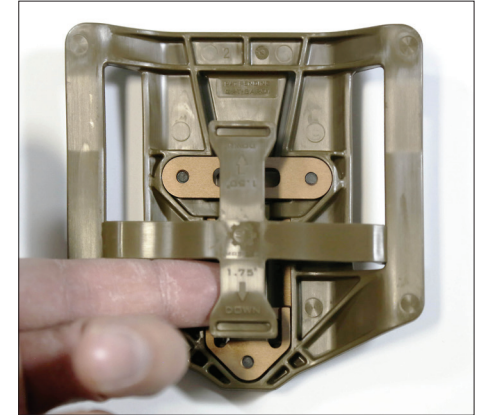
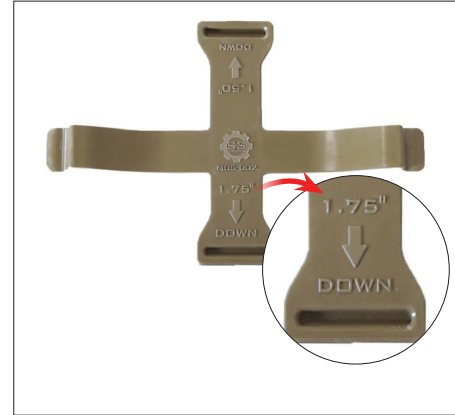
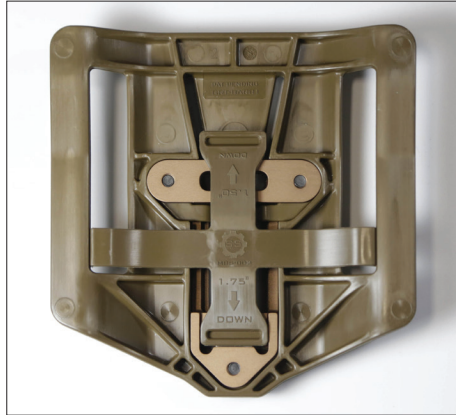
GRT™ Reinforced Belt Adapter

WITH MULTI-BELT STABILIZER (MBS)

PART NUMBER:

GRT-BAR01

ADJUST MBS FOR DIFFERENT BELT WIDTHS



1

The GRT™ Reinforced Belt Adapter is compatible with 1.50", 1.75", and 2.00" wide belts. The belt adapter ships with the Multi-Belt Stabilizer (MBS) pre-set for a 1.75" wide belt and adjustable for a 1.50" wide belt. For 2.00" belts, simply remove the MBS from the adapter.

2

To adjust for a 1.50" wide belt, flip the GRT™ Reinforced Belt Adapter to back side to access the MBS.

3

The orientation of the MBS dictates what belt width the adapter will accept. Belt width markings can be found on vertical members of the MBS. The word "DOWN" and a downward facing arrow with the respective belt width indicates what belt width the adapter has been configured for.

4

To remove the MBS, lift the vertical member in the 6 o'clock position and rotate the MBS clockwise.





END USER INSTRUCTIONS - READ BEFORE USE

PRODUCT NAME:

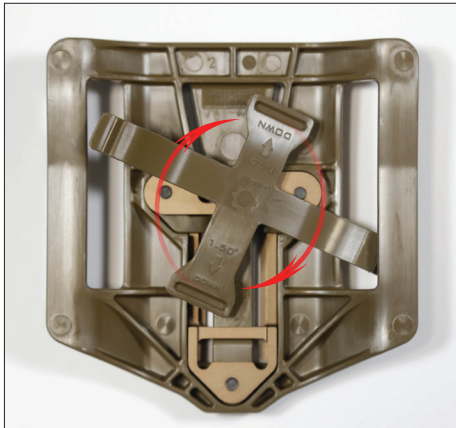
GRT™-Reinforced Belt Adapter

WITH MULTI-BELT STABILIZER (MBS)

PART NUMBER:

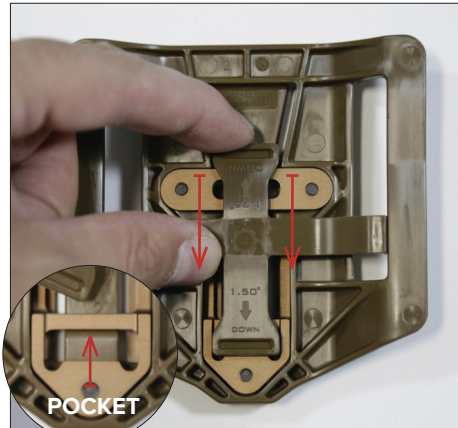
GRT-BAR01

CONTINUED...



5

Rotate the MBS 180° so the words, "1.50" DOWN" can be read upright.



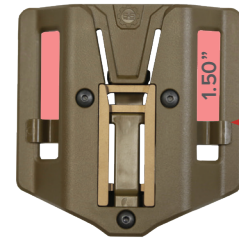
6

Ensure that the horizontal members in the 3 and 9 o'clock positions snap into place and that the bottom tab locks into pocket indicated above. If locked correctly, the MBS should not move side to side or up/down.



7

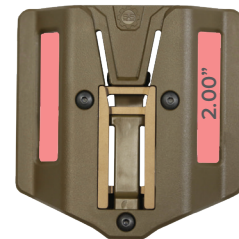
Flip the adapter over. The GRT™ Reinforced Belt Adapter has now been configured for 1.50" wide belt.



MBS set for 1.50" belts



MBS set for 1.75" belts



No MBS needed for 2.00" belts

OPEN CAMERA TO
VIEW USER INSTRUCTIONS OR VISIT
[WWW.SSPGEAR.COM/
END-USER-INSTRUCTIONS](http://WWW.SSPGEAR.COM/END-USER-INSTRUCTIONS)

